

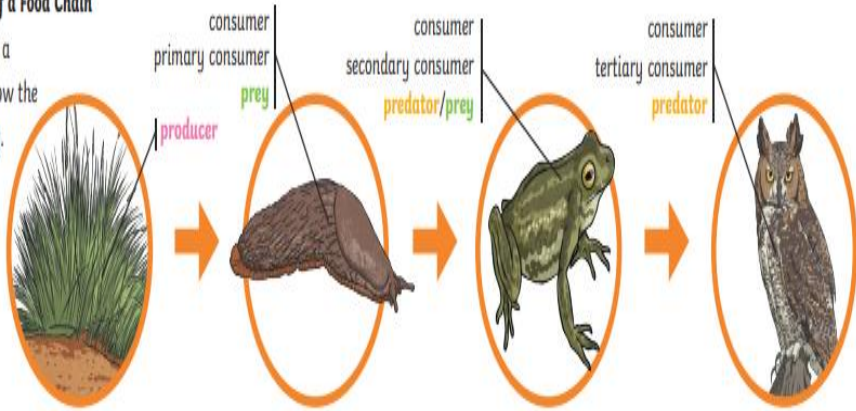


Science – Animals Including Humans

A Food Chain

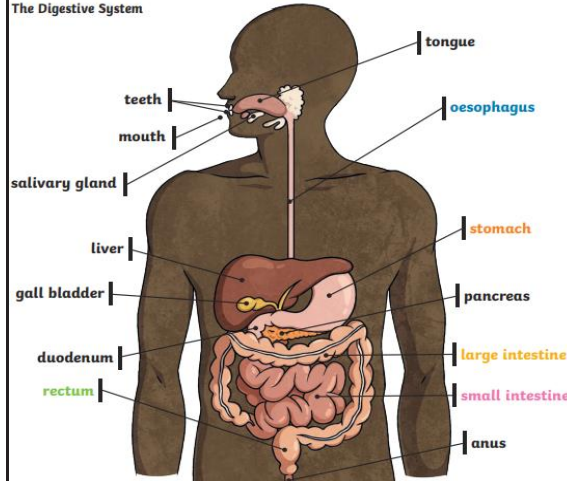
An Example of a Food Chain

The arrows in a food chain show the flow of energy.



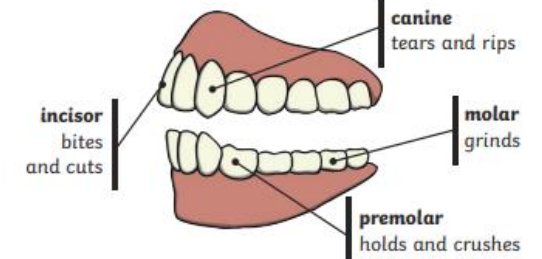
The Digestive System

The Digestive System



Human Teeth

Human Teeth and Their Functions



Some people have wisdom teeth but they have no function now.

To help prevent tooth decay:

- limit sugary food and drink;
- brush teeth at least twice daily using a fluoride toothpaste;
- visit your dentist regularly.



Key Vocabulary

digest	Break down food so it can be used by the body.
oesophagus	A muscular tube which moves food from the mouth to the stomach.
stomach	An organ in the digestive system where food is broken down with stomach acid and by being churned around
small intestine	the Part of the intestine where nutrients are absorbed into the body.
Large intestine	Part of the intestine where water is absorbed from remaining waste food. Faeces are formed in the large intestine
rectum	Part of the digestive system where faeces are stored before leaving the body through the anus.

Key Vocabulary

herbivore	An animal that eats plants.
carnivore	An animal that feeds on other animals.
omnivore	An animal that eats plants and animals.
producer	An organism, such as a plant, that produces its own food.
predator	An animal that hunts and eats other animals.
prey	An animal that gets hunted and eaten by another animal.



Animals Including Humans – Skills – Working Scientifically

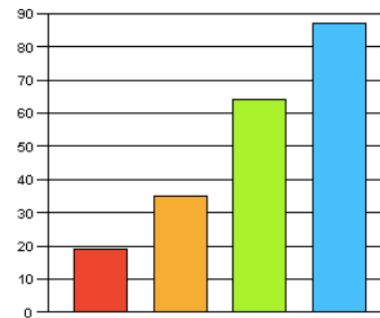
National Curriculum

Gathering, recording, classifying and presenting data in a variety of ways to help answer questions.

Recording findings using simple scientific language, drawings, labelled diagrams, keys, bar charts and tables.

Use straightforward, scientific evidence to answer questions or to support their findings.

Bar chart



Table

Week	Total grass height (inches)		
	Trial A	Trial B	Trial C
0	0.50	0.50	0.50
1	1.26	1.01	0.94
2	2.21	1.48	1.13
3	3.52	2.03	1.20

Scientific Equipment

Magnifying glass



Petri dish



teaspoon



Key Vocabulary

classify	To arrange a group of people/organisms or things into classes or categories.
compare	Note similarities and differences between different things e.g. compare different types of materials
biology	Biology is the scientific study of life.
bar graph	These graphs are used to compare data using bars.
axis	Line graphs consist of two axes: x-axis (horizontal) and y-axis (vertical)
data	Information that has been collected.
group	To put people/organisms or things into different sections.
key	Keys are used to identify different species. A key will usually ask questions based on easily identifiable features of an organism.
research	To find out about something using a range of sources.